

Portal

Childcare Management

Welsh Government Funded:

Level 5 Leadership and Management in Children's Care, Play, Learning and Development (CCPLD)

Portal



City & Guilds



L5 Leadership and Management in Children's Care, Play, Learning and Development

Aim: To develop the knowledge, skills and competence required for leadership and management of childcare settings and to improve the quality of childcare in Wales.

Who is this qualification suitable for?

This is for individuals:

- Who wish to become occupationally competent as advanced practitioners or leaders and managers within the childcare sector.
- Who will have considerable experience in children's care or early years practice and must have a management role or be undertaking leadership or management activities.
- Who are managing nurseries, Flying Start provision, or for those delivering the curriculum for 3-7 year olds in Foundation Phase settings in Wales.

Applicants must already have a qualification at level 3 and the level 4 Preparing for Leadership and Management in Children's Care, Play, Learning and Development.

How is the qualification assessed?

Learners are expected to complete a variety of tasks to demonstrate their competence and knowledge. Feedback will be provided throughout the course and the summative assessment which is externally and internally assessed comprises of:

- Submission of a portfolio of evidence
- Completion of a business project
- Final evaluation of activities through a professional discussion
- A reflective log

Course Duration

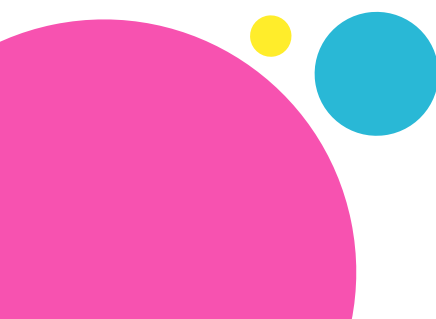
Up to 21 months

Enrolment Process

- Completion of application form
- Initial assessment to include:
 - literacy
 - numeracy
- Skill scan
- Discussion with employer and assessor
- Induction with your designated assessor

Welsh medium delivery information

As a proud bi-lingual company, we are also able to offer Welsh delivery. All resources produced by Portal are available through the medium of Welsh, however where a Welsh equivalent does not exist, websites and published reading materials are only available through the medium of English.



How is the qualification delivered?

Delivery Methods:

The delivery will involve building on the knowledge gained via completion of the Level 4 Preparing for Leadership and Management in CCPLD and will be facilitated via regular 1-2-1 meetings between assessor and learner.

Mandatory Units

Unit Title

Lead and manage child centre practice

Lead and manage effective team performance

Lead and manage the quality of workplace/setting

Professional practice

Lead and manage practice that promotes the safeguarding of children

Lead and Manage health, safety and security in the workplace/setting

Example Optional Units

Unit Title

Lead and manage health, well-being and creative learning within childcare provision

Lead and manage speech, language and communication skills

Essential Skills	Method of Assessment
Communication – Level 2	Controlled task and test
Application of Number - Level 2	Controlled task and test



Learner Benefits

The qualification allows learners to progress their employment opportunities or to continue to further study at a higher level

Apply in practice a range of leadership and management concepts, theories and techniques

Can reflect on their own and others' knowledge, leadership and management styles and understand how these impact on those they work with, both within and outside of their setting.

Employer Benefits

Leaders and managers that use child-centred approaches in practice

Leaders and managers that can improve the service and performance within children's care, play and learning in line with regulatory standards

Opportunity to develop their own future managers and offer 'acting up' positions for their staff who can be given additional responsibilities in order to complete the requirements of the qualifications.

Next Steps

To request more information or to schedule an information session with our advisor please get in touch:

Frances Lee

07958 669560 frances.lee@portaltraining.co.uk

Shawn Staples

07706 330206 shawn.staples@portaltraining.co.uk

